



**SCDF**  
The Life Saving Force



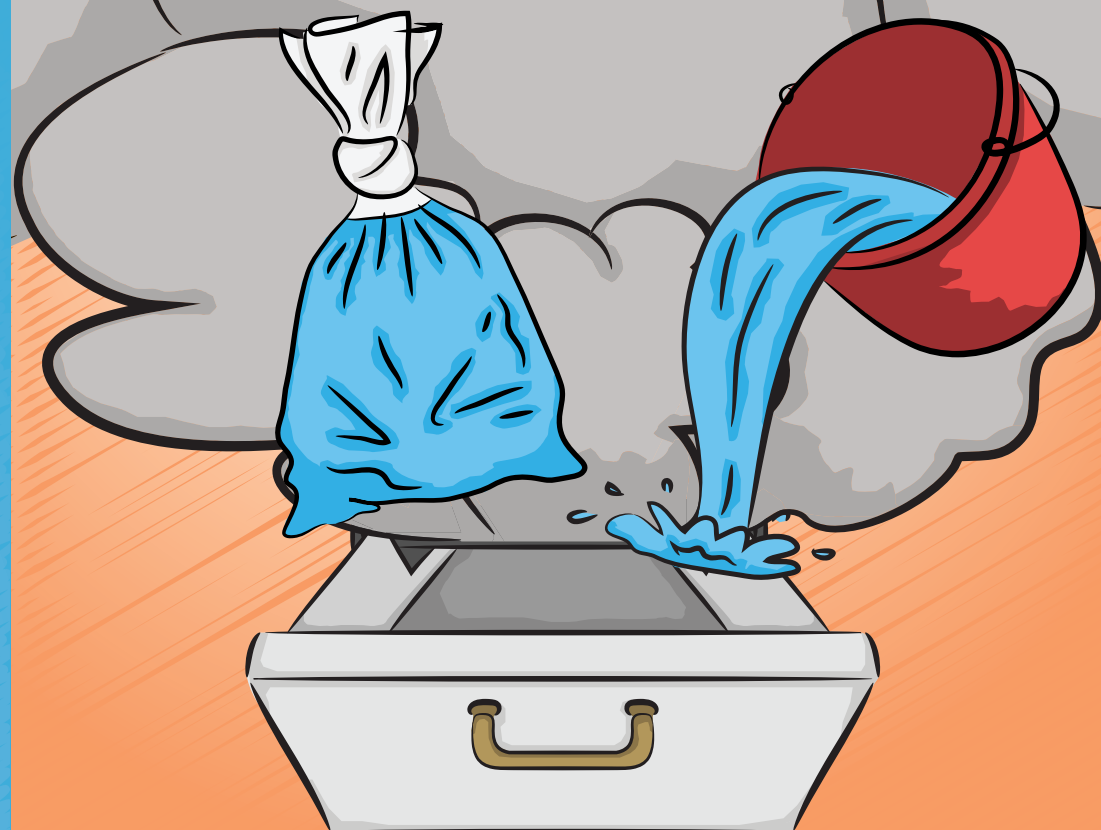
National Fire  
And  
Civil Emergency  
Preparedness  
Council

Supported by



People's Association

# YOU CAN HELP PUT OUT **RUBBISH CHUTE FIRES**



Let's tackle **rubbish chute fires** for a **fire safe neighbourhood**.

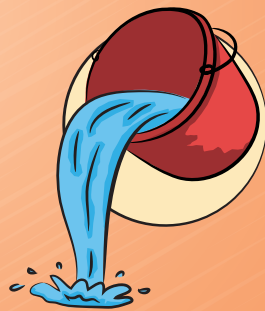
Rubbish chute fires are **minor** and can be **easily put out**.

You need **not** call 995 as rubbish chute fires are typically **small with no risk of spreading**. These fires can be put out by simply **pouring water down the chute** or **dropping plastic bags filled with water into the chute**.

You can help to prevent such fires from occurring **by not throwing flammable items** like paint and kerosene or lighted materials such as burning embers and cigarette butts **into the rubbish chute**.

Be a **Community First Responder** today by helping to put out the localized fire in the rubbish chute in your neighbourhood. **By doing so, you are helping to free up the scarce SCDF resources to attend to more pressing cases such as life-threatening situations.**

### 2 ways to extinguish rubbish chute fires



Fill a plastic bag with water.



Tie and drop the bag into the rubbish chute.



Fill a small pail or scoop with water.



Pour it into the rubbish chute.

**Repeat** either of these steps until there is **no more smoke**.

## Frequently Asked Questions (FAQs)

### (1) What must I do when there is a rubbish chute fire?

You could help to douse such fire by simply pouring water down the chute.

### (2) How much water should I pour to douse a rubbish chute fire?

You should adopt one of the two methods:

**a.** Fill a plastic bag with water and tie it before dropping it into the rubbish chute; **or**

**b.** Pour a scoop or a small pail of water directly into the rubbish chute.

For either method that you had adopted, do so repeatedly until you do not see any smoke coming out from the hopper of the chute.

### (3) Is there any element of risk involved in getting members of public to put out the rubbish chute fires?

A fire within a rubbish chute is merely a smouldering fire that is typically small with no risk of spreading. Each year, about 20% of the rubbish chute fires have already been put out by members of the public prior to SCDF's arrival at the scene. To date, there has been no reported injury arising from such small localized fires.

### (4) Why is there a need for me to assist in putting out the rubbish chute fires?

Annually, the SCDF responds to more than 1000 rubbish chute fires. Such fires are typically very small in nature and could be easily put out by members of the public. This will considerably free up the scarce SCDF resources in enabling us to attend to victims in dire need of our help such as in life-threatening situations.

### (5) How would I know if the fire in the rubbish chute has been put out?

The fire would have been put out once there is no smoke coming out from the hopper of the rubbish chute.

### (6) Can rubbish chute fires be prevented?

Such fires are easily preventable by ensuring that flammable items such as paint and kerosene, or lighted materials like burning embers and cigarette butts, are not thrown into the rubbish chute.