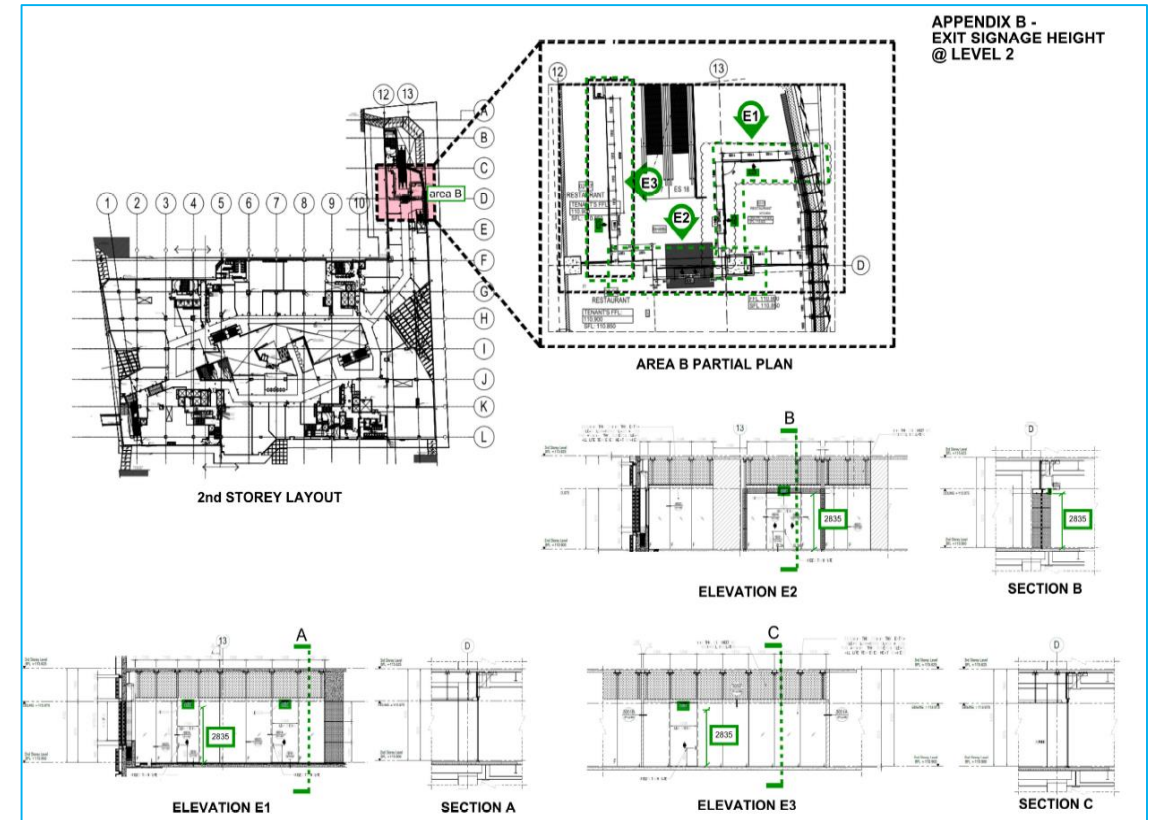
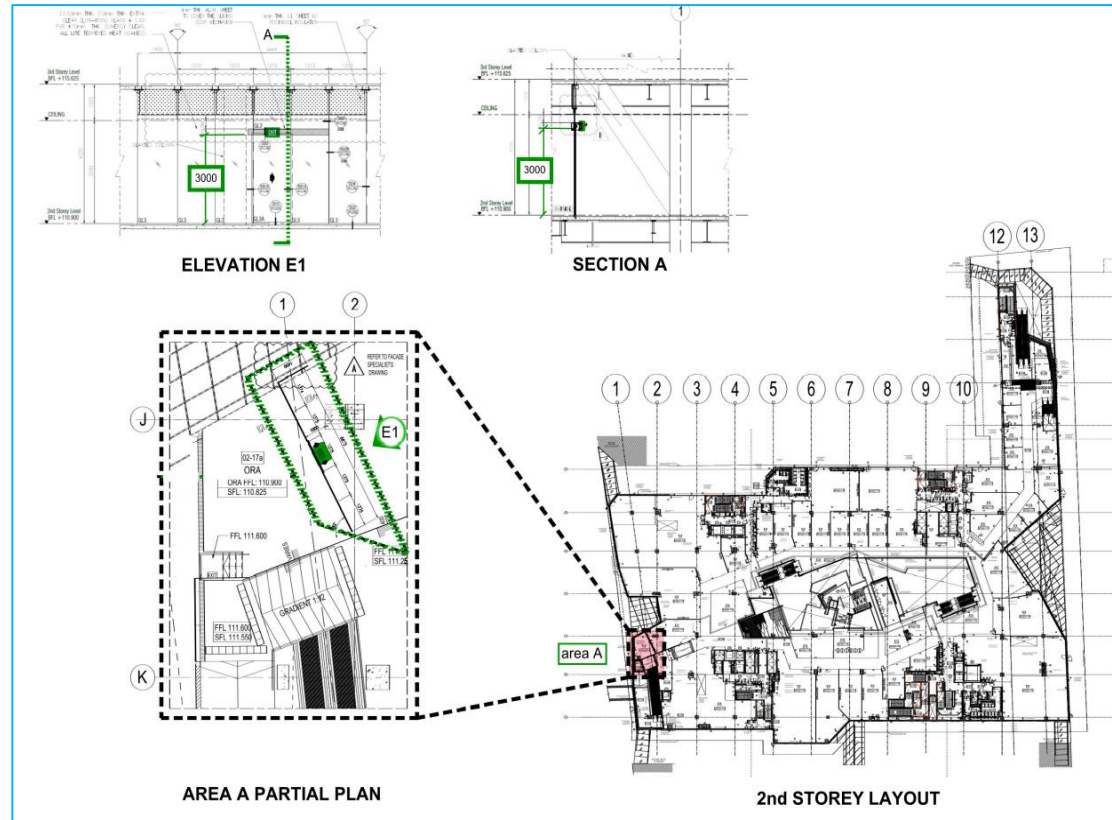


Guide in computing waiver application payment

The illustrated example(s) purely serves as guide when making waiver application payment

Example 1

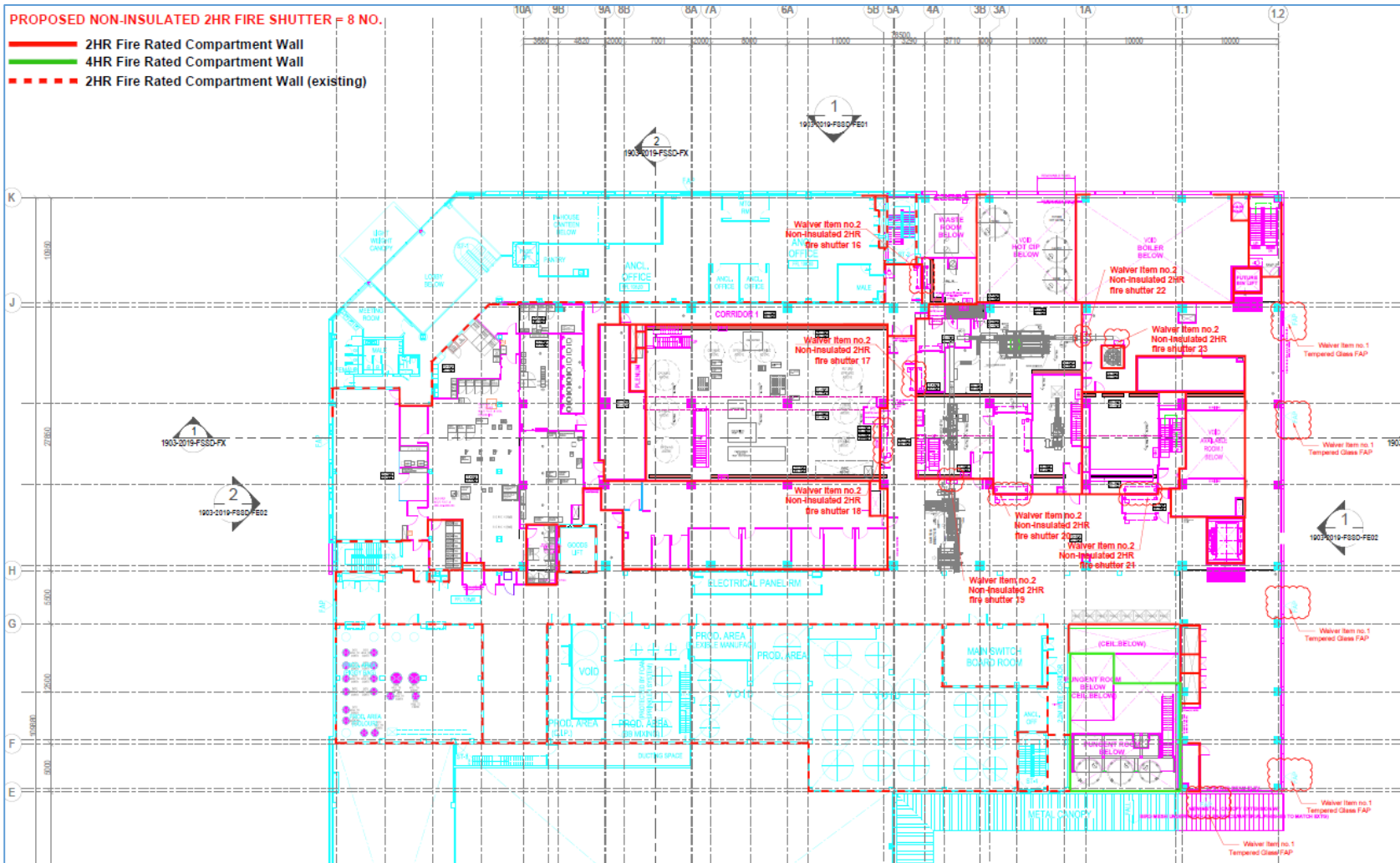
E.g. 1 – Waiver to consider allowing mounting height of exit sign to deviate from SS563



- One fee for the application as the deviation is on the same floor but different location.

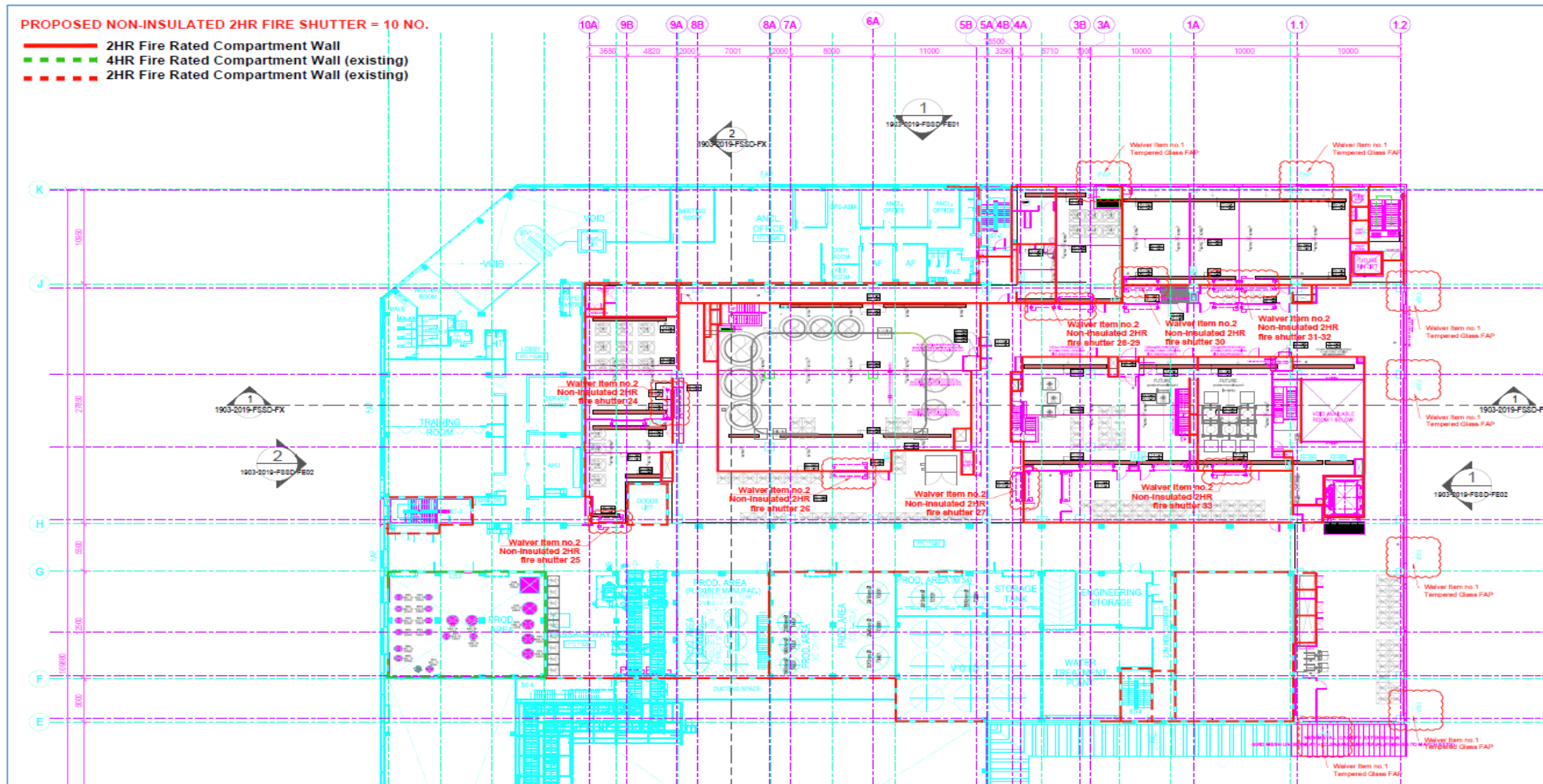
Example 2

E.g. 2 – Waiver to consider allowing the use of non-insulated fire rated shutter (2nd floor)



- Different assessment is required at the different floor where the fire rated shutter without insulation is proposed (different design variation), hence each floor shall be charged separately

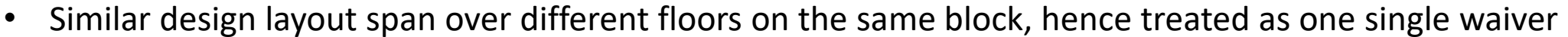
E.g. 2 – Waiver to consider allowing the use of non-insulated fire rated shutter (3rd floor)



- Different assessment is required at the different floor where the fire rated shutter without insulation is proposed (different design variation), hence each floor shall be charged separately

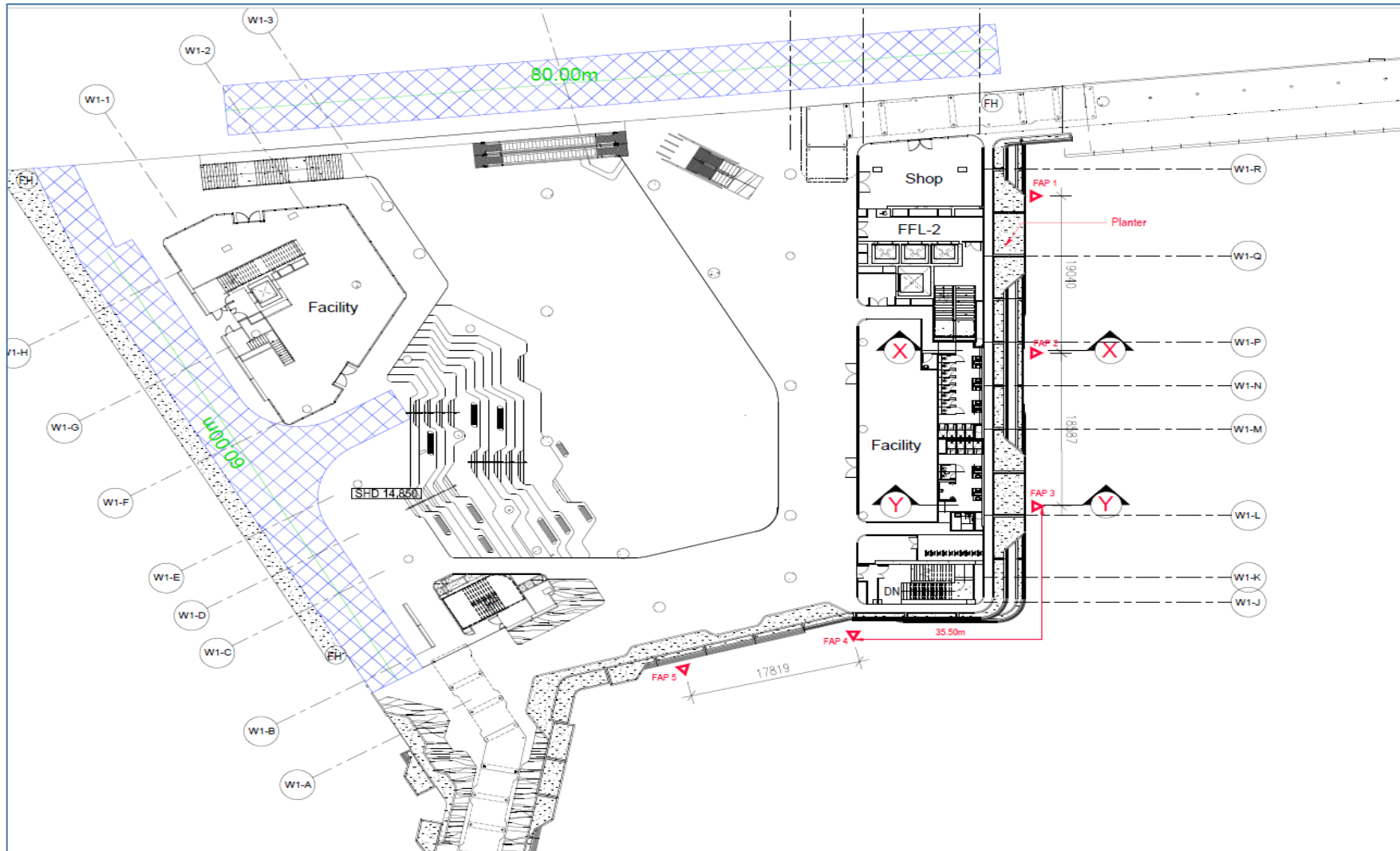
Example 3

- Similar design layout span over different floors on the same block, hence treated as one single waiver



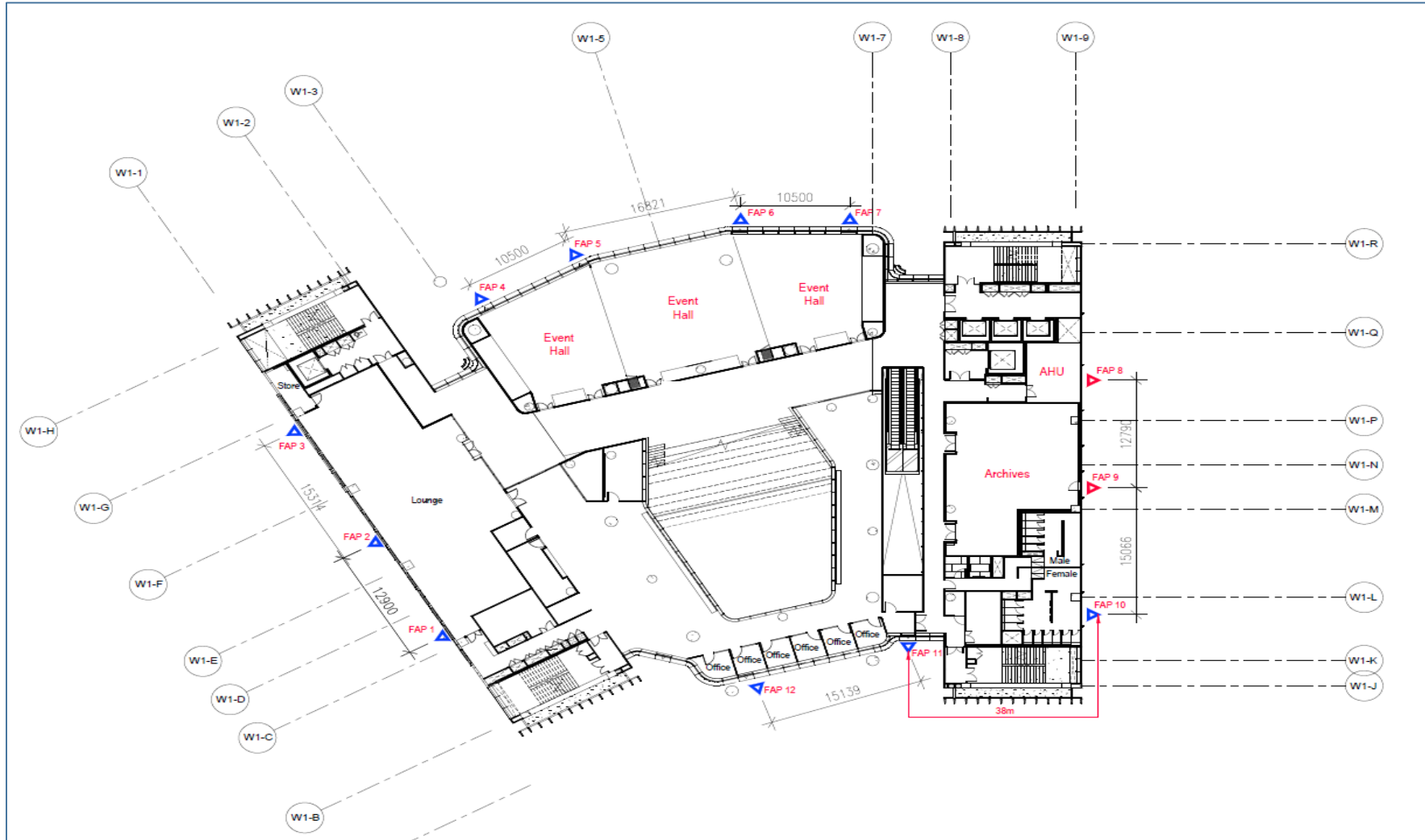
Example 4

E.g. 4 – Waiver to consider allowing fireman access panel to be spaced more than 20m apart (2nd floor)



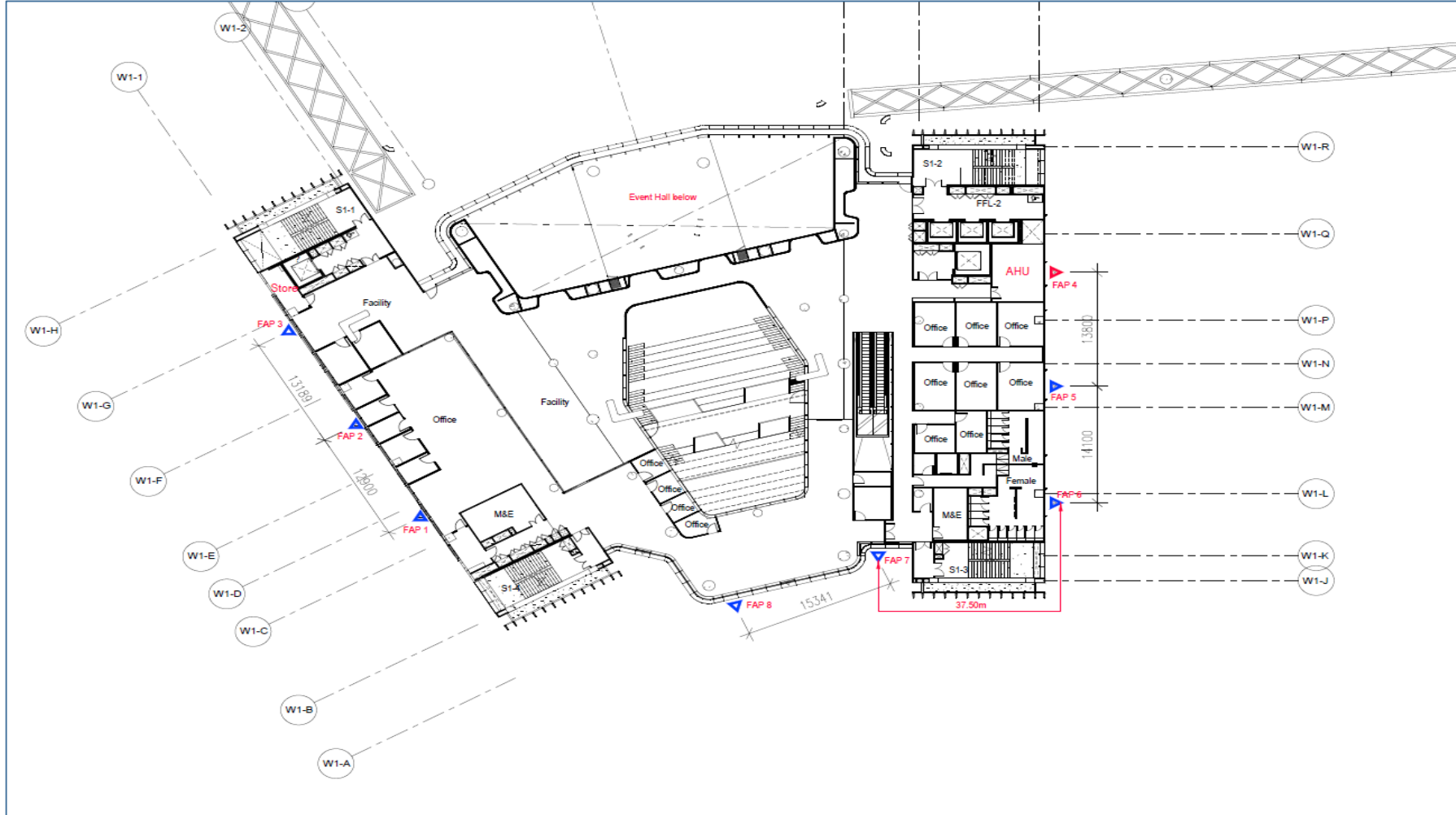
- One fee as the issue and location is similar throughout the various floor

E.g. 4 – Waiver to consider allowing fireman access panel to be spaced more than 20m apart (3rd floor)



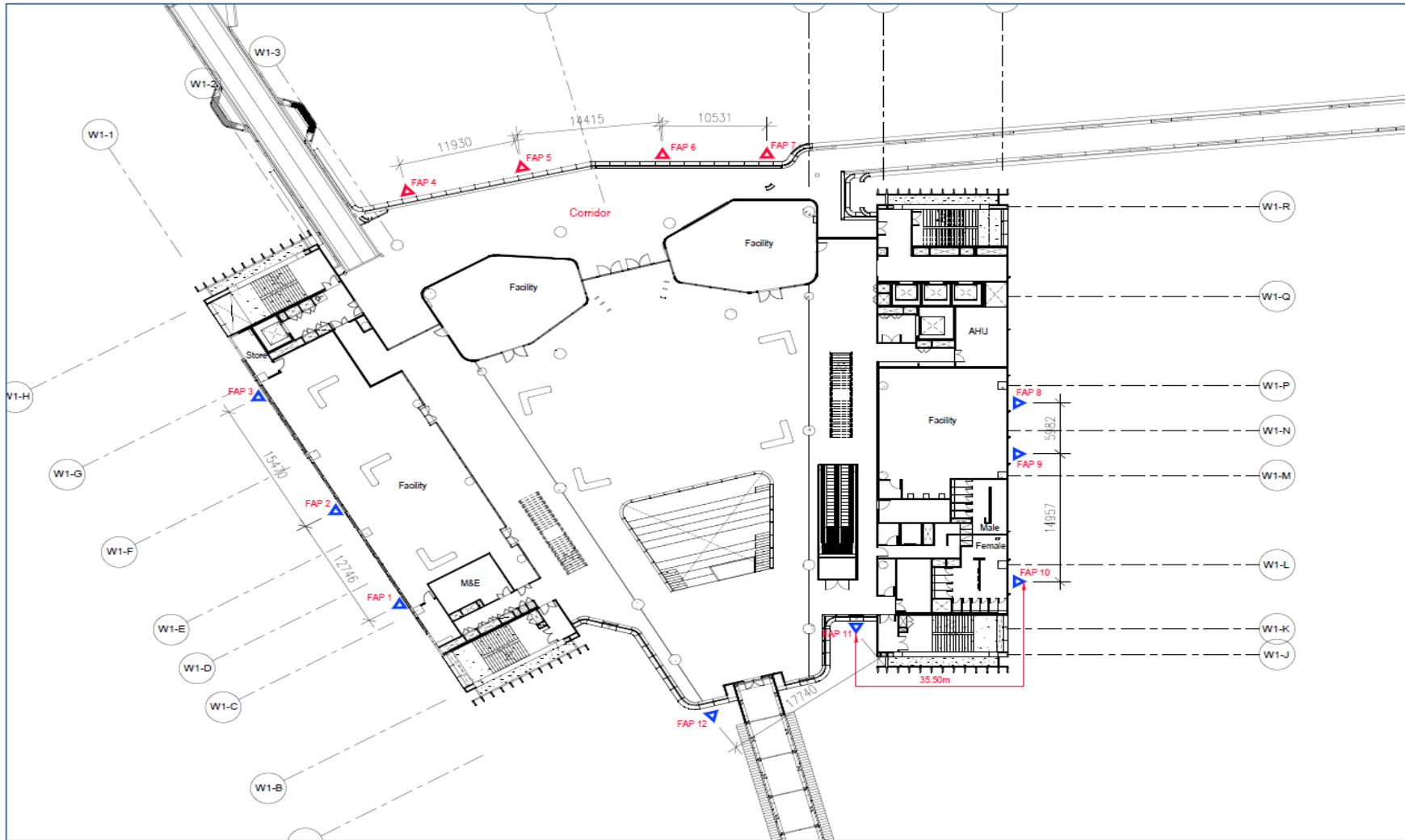
- One fee as the issue and location is similar throughout the various floor

E.g. 4 – Waiver to consider allowing fireman access panel to be spaced more than 20m apart (4th floor)



- One fee as the issue and location is similar throughout the various floor

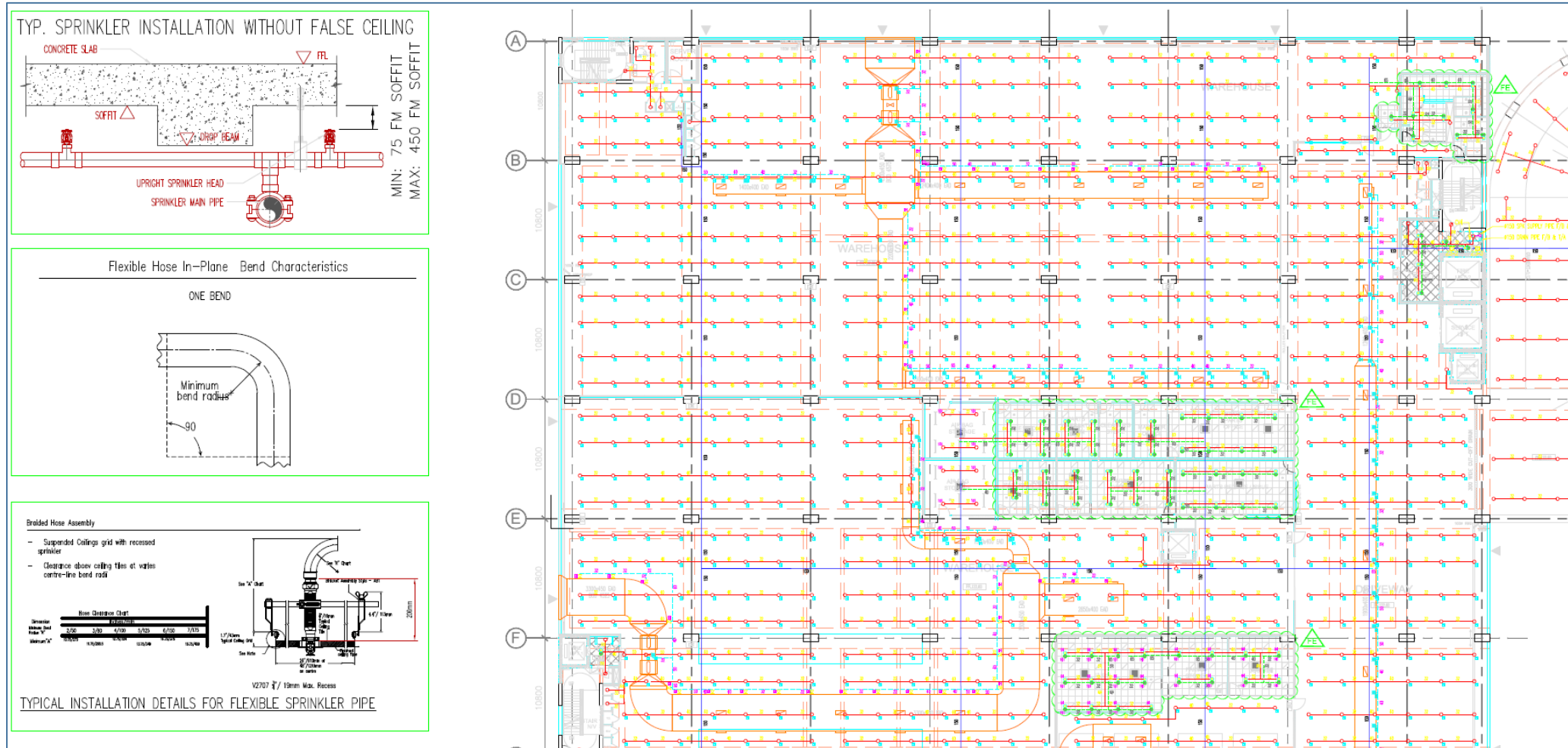
E.g. 4 – Waiver to consider allowing fireman access panel to be spaced more than 20m apart (5th floor)



- One fee as the issue and location is similar throughout the various floor

Example 5

E.g. 5 – Waiver to consider allowing the use of flexible sprinkler head, CP52 (Various floors)



- One fee as the issue is on the sprinkler system and is identical throughout the premises