



SCDF

The Life Saving Force

... for a safer Singapore

FSM Briefing 2023

SCDF Annual Fire Statistics 2022 and Case Studies on Recent Fire Incidents

MAJ Michael Fong

Senior Fire Investigator

Fire Investigation Unit

Singapore Civil Defence Force

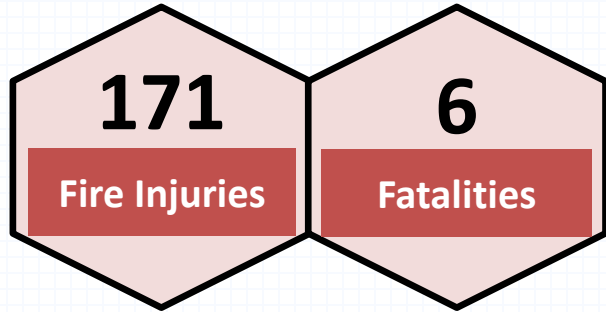
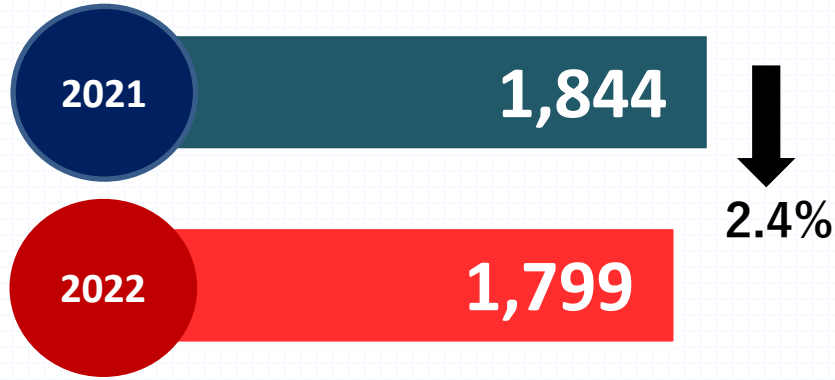


Scope

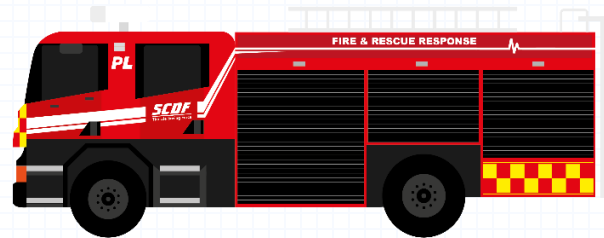
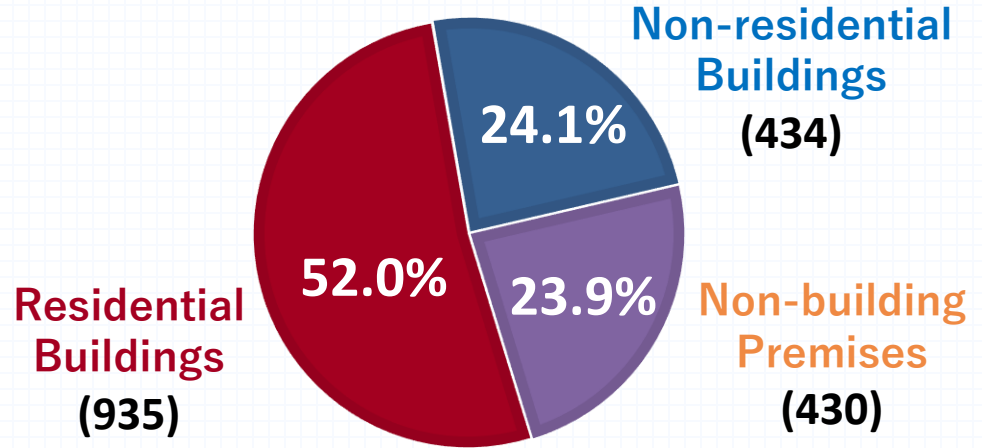
- Annual Fire Statistics for 2022
 - i. Total Fire Calls
 - ii. Breakdown of Fire of Concerns
- Case Studies & Fire Safety Advisories
- Useful Practices (FSM & CERT)



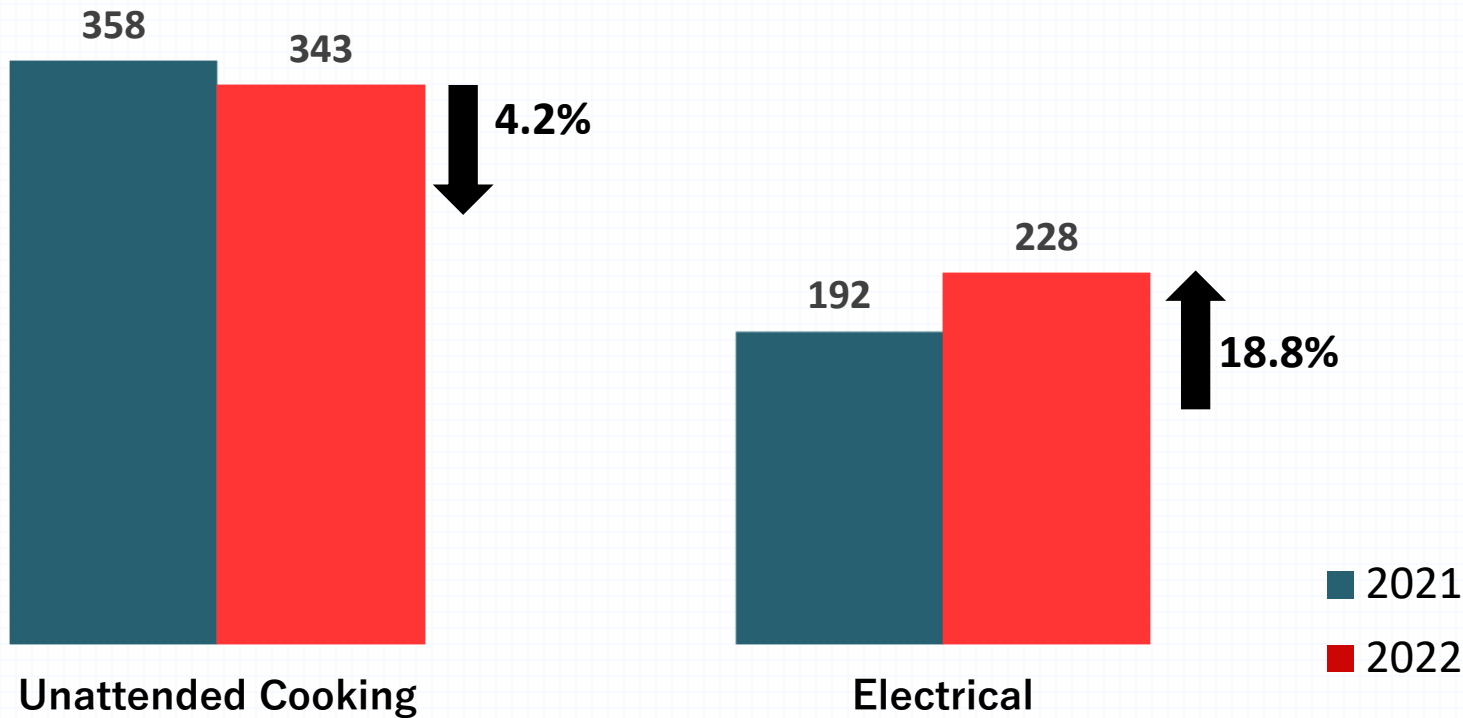
Total Fire Calls



Breakdown of Fire Calls (2022)



Types of Fires of Concerns in Residential Buildings



HOUSEHOLD FIRE SAFETY CHECKLIST

(ELECTRICAL WIRING & COMPONENTS)

- Ensure all electrical plugs have the Safety Mark
- Switch all equipment and appliances off when not in use
- Ensure all wires are in good condition (i.e. without broken insulation or exposed wiring)
- Lay all wires in the open with none running under rugs or through door openings
- Do not place television sets near combustible materials



IN COMMON AREAS

- Do not discard items along corridors, lift lobbies, escape passageways and staircases
- Ensure a minimum of 1.2m clearance along escape passageways
- Call the Town Council to arrange for the removal of bulky items



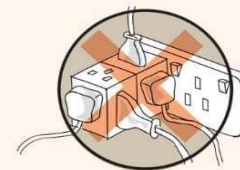
IN THE KITCHEN

- Never leave cooking unattended as it could result in kitchen fires
- Keep flammable products and combustibles away from heat sources while cooking
- Keep cooking area clean and free of grease

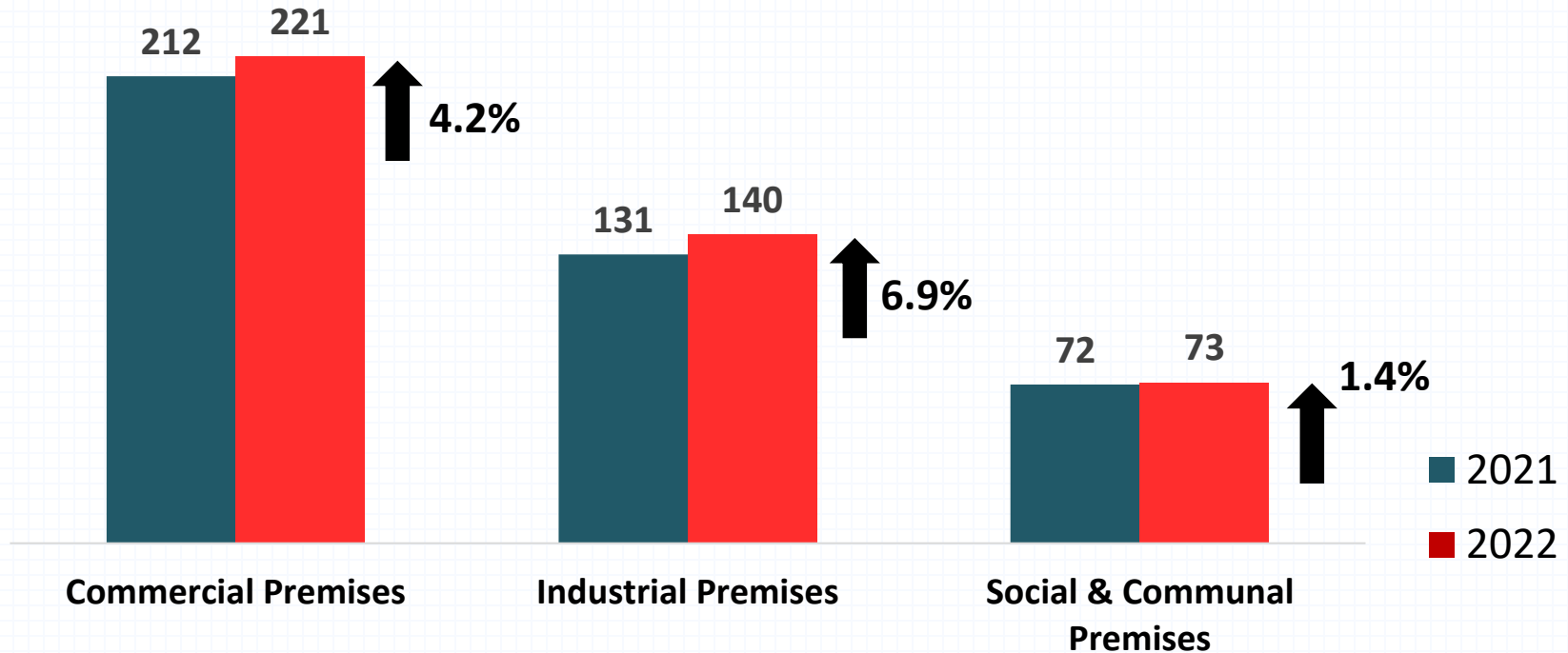


AT HOME

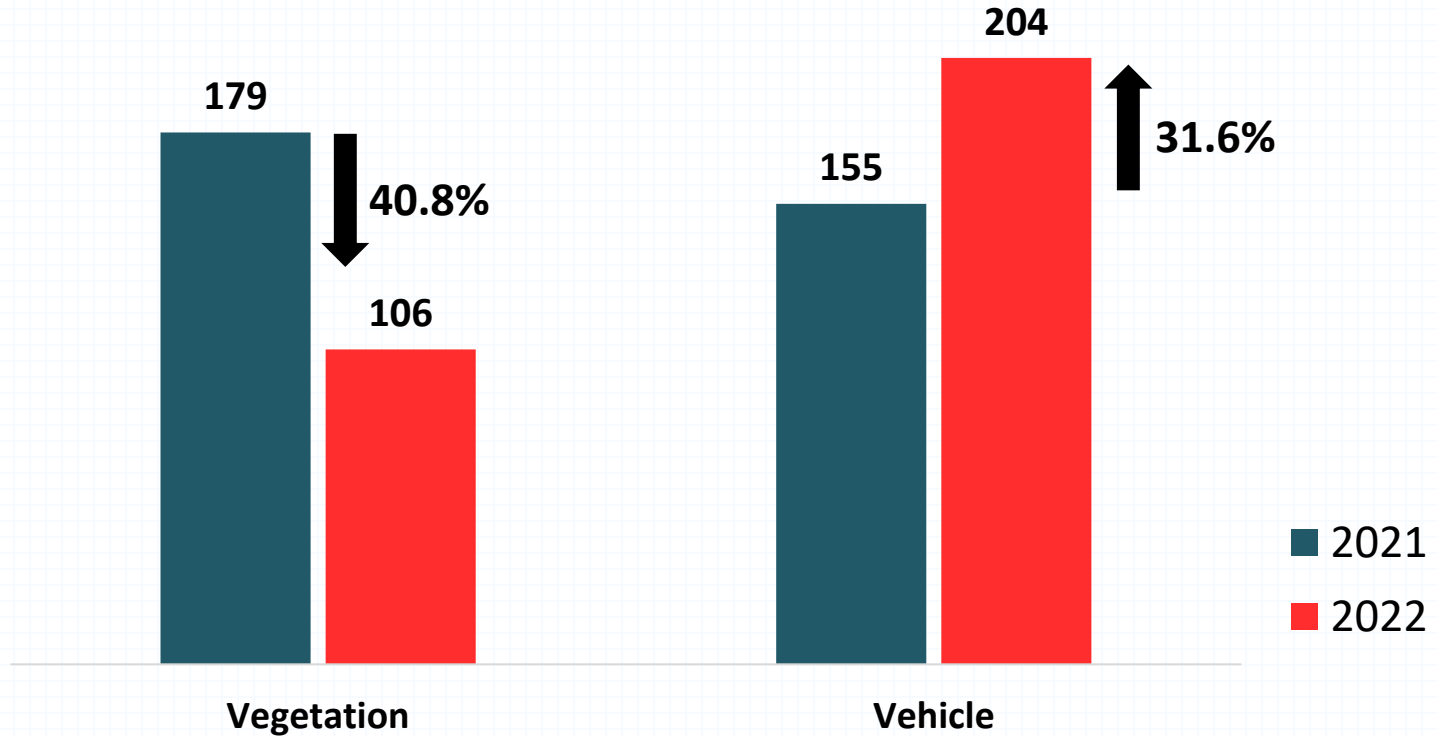
- Never overload electrical outlets
- Always switch off appliances when they are not in use
- Check for broken or exposed wiring; if any are found, replace the wires immediately



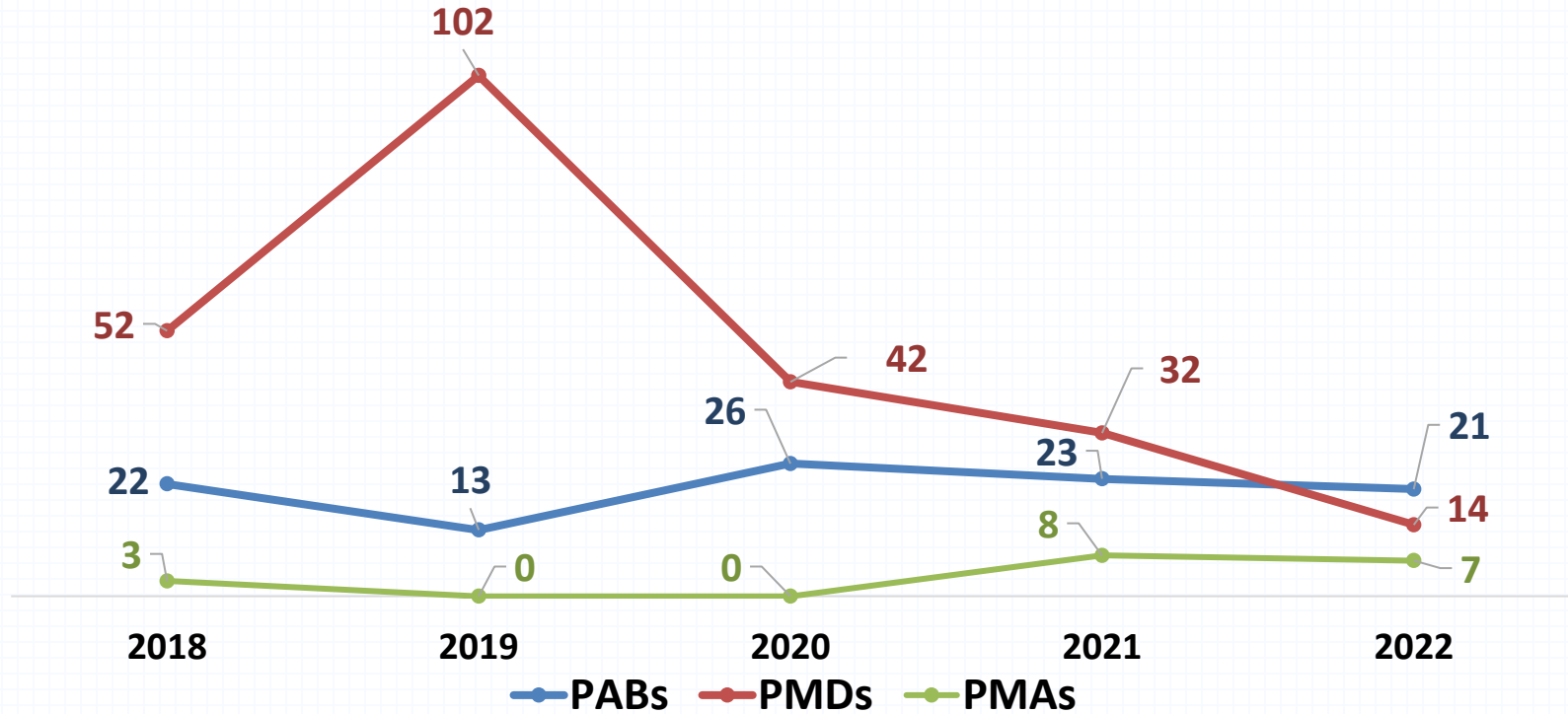
Breakdown of Fires at Non-Residential Buildings



Breakdown of Fires at Non-Building Premises



PAB, PMD and PMA Fires Over The Last 5 Years



FIRE SAFETY TIPS FOR PMDs & PABs

Personal Mobility Devices Power-Assisted Bicycles

DO

- Do purchase PABs with the **EN15194** certification and affixed with LTA's **orange seal of approval**
- Do purchase registered PMDs with **UL2272** Certification Mark
- Do use a power adaptor that carries the **Safety Mark** and is recommended by the manufacturer
- Do charge PAB/PMD on a **hard, flat surface** to allow optimal dissipation of heat
- Do regularly **examine batteries for any damage or deformities** such as bloating, corrosion or powdery residue

DON'T

- Do not buy or use **non-original batteries**
- Do not charge the PAB/PMD **immediately after use**
- Do not **tamper with, modify, or attempt to repair** a device on your own
- Do not charge a PAB/PMD or its batteries **near combustible materials or along an escape path**
- Do not leave batteries or devices to **charge unattended for an extended period of time**



Case Studies



Case Study 1



- The affected premises deals with hazardous waste management.
- The fire involved a distillation tank in a distillation system.
- The cause of fire was due to the accumulation of flammable vapours being ignited by Electrostatic Arc Discharge (ESD).
- The fire was extinguished by SCDF and in-house CERT using one in-situ hose reel, one hose line jet and multiple fire extinguishers.



Areas Well Done (FSM & CERT)

- FSM & CERT **continued to assist** SCDF by recalling the company's management and retrieving the **Premises Emergency Data** (PED) and **guiding** subsequent SCDF resources arrival.
- FSM & CERT members were forthcoming with **information** during the **fire investigation follow-ups**.

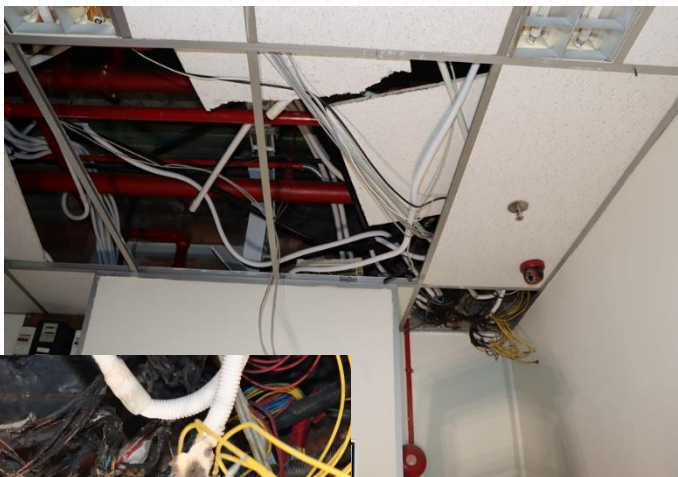


Fire Safety Advisories

- Companies should practice earthing during transfer operations, including for mobile containers (e.g. IBC and other package containers).
- Wooden pallets should not be placed below the containers to improve the dissipation of electrostatic charges.



Case Study 2



- The fire involved electrical wirings in the false ceiling of an administrative office.
- The fire was extinguished by CERT using one CO₂ extinguisher.



Areas Well Done (FSM & CERT)

- FSM & CERT's **quick thinking** (bringing the extinguisher to check out the power trip) allowed them to **swiftly ascertain the source** of fire within the room and **extinguish** it before the arrival of SCDF.
- Through their quick response, the incident was brought **under control rapidly** with **minimal damages** to the property.

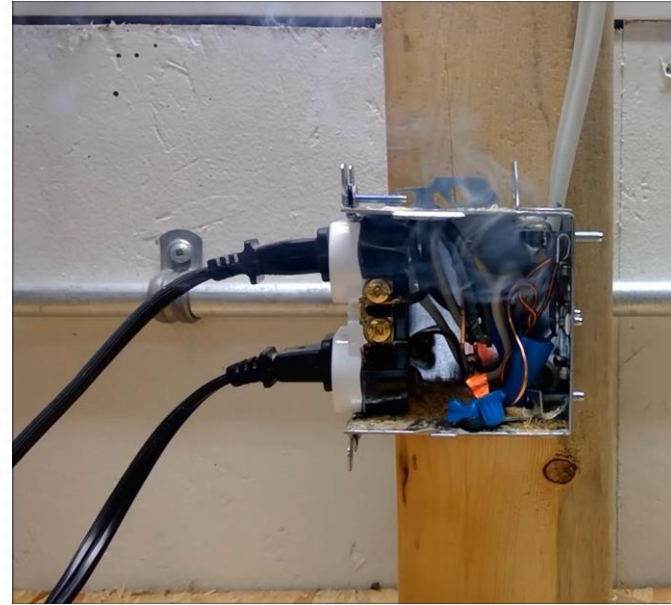


Fire Safety Advisories

Loose / Improper Connection

- High resistance causes overheating.
- Arcing may occur with frequent making / breaking of contacts.
- May ignite the conductors or nearby combustibles

Have a Licensed Electrical Worker (LEW) to Perform Regular Checks / Servicing

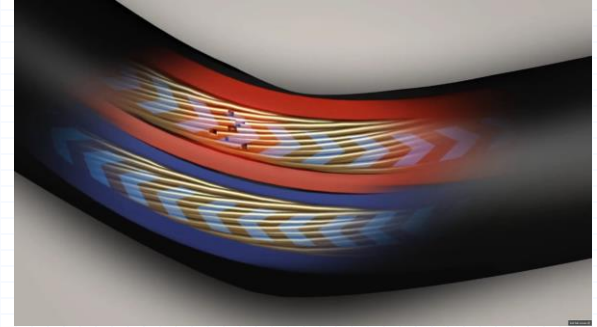


Fire Safety Advisories

Arc Fires

- Occurs when: -
 - i. Tight corners/ Pinching
 - ii. Loose plugs
 - iii. Externally damaged
 - iv. Worn out insulation
 - v. Crushed by furniture

Check the condition of wires regularly. Frayed wires or cracked cords should be replaced or repaired immediately



Fire Safety Advisories

Overloading

- Occurs when current exceeds rated capacity
- Excessive current can cause heating, melting and insulation damage to the wires/cables, possibly starting a fire.
- May ignite the conductors or nearby combustibles



Never overload electrical outlets with electrical appliances



Useful Practices (FSM & CERT)



Useful Practices (FSM & CERT)

■ Before Fire

- i. Clear and updated Emergency Response Plan (ERP)
- ii. Regular refresher training for the members (as recommended in the National CERT standard)
- iii. Ensure proper checks of In-Place Protection systems such as sprinklers, fire alarms
- iv. Appropriate, adequate and well-maintained equipment e.g., Personal Protective Equipment (PPE), Mitigation, First Aid



Useful Practices (FSM & CERT)

■ During Fire

- i. Prompt assessment of the fire location
- ii. Identification / isolation of hazardous materials (if any) in the vicinity of the fire location
- iii. Boundary cooling (if necessary) to minimize the spread
- iv. Guiding of SCDF crew to the affected area
- v. Sharing of the list of hazardous materials and Material Safety Data Sheet (MSDS)
- vi. Continuing to support SCDF for the firefighting operations



Useful Practices (FSM & CERT)

■ Post Fire

- i. Sharing of the events leading up to the incident
- ii. Actions taken during the fire
- iii. CCTV footages of the affected area
- iv. Sharing of the relevant documents, such as
 - Inventory list
 - Layout plans
 - Electrical plans
 - Recent works
 - Safety protocols
 - Reports of recent issues



Thank You

